



**File Name:** canon imageclass d780 user manual.pdf

**Size:** 4669 KB

**Type:** PDF, ePub, eBook

**Category:** Book

**Uploaded:** 26 May 2019, 20:47 PM

**Rating:** 4.6/5 from 680 votes.

**Status:** AVAILABLE

Last checked: 5 Minutes ago!

**In order to read or download canon imageclass d780 user manual ebook, you need to create a FREE account.**

[\*\*Download Now!\*\*](#)

eBook includes PDF, ePub and Kindle version

[Register a free 1 month Trial Account.](#)

[Download as many books as you like \(Personal use\)](#)

[Cancel the membership at any time if not satisfied.](#)

[Join Over 80000 Happy Readers](#)

### Book Descriptions:

We have made it easy for you to find a PDF Ebooks without any digging. And by having access to our ebooks online or by storing it on your computer, you have convenient answers with canon imageclass d780 user manual . To get started finding canon imageclass d780 user manual , you are right to find our website which has a comprehensive collection of manuals listed.

Our library is the biggest of these that have literally hundreds of thousands of different products represented.



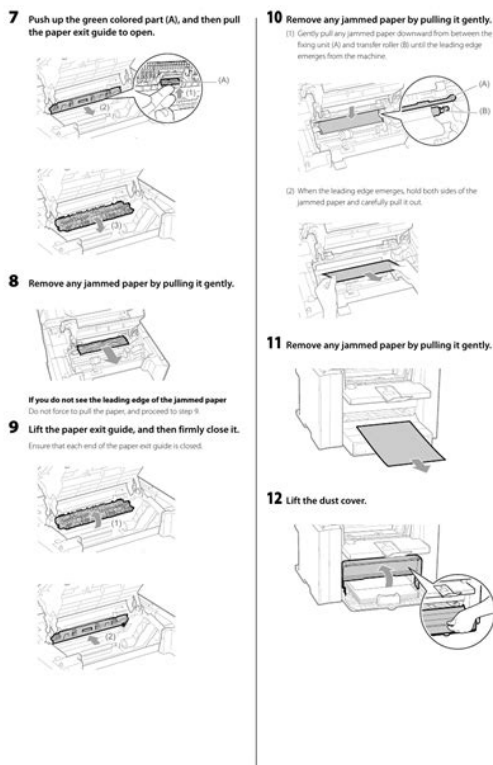
## Book Descriptions:

# canon imageclass d780 user manual



We have 5 Canon imageCLASS D780 manuals available for free PDF download Printer Manual, Fax Manual, Reference Manual, Setup Instructions, Specification. This page requires Javascript. Modify your browsers settings to allow Javascript to execute. See your browsers documentation for specific instructions. To install your download click on the name of the downloaded file. Please click below to find a quick resolution to your inquiry. See the warranty card for full details. The driver may be included in your OS or you may not need a driver. Recommended Drivers File Name Date File Size Optional Drivers File Name Date File Size Recommended Software File Name Date File Size Optional Software File Name Date File Size Recommended Manuals File Name Date File Size Optional Manuals File Name Date File Size The warranty in the preceding sentence applies to Toner and Drums A defective Toner or Drum returned to Canon U.S.A., Inc., Canon Canada, Inc. or an The warranty period for any Drum i.e. Canon USA, Inc., Canon Canada, Inc. or a Dealer. To obtain the shipping address of Canon U.S.A, Inc. or. Canon Canada, Inc., please call the Canon U.S.A., Inc. Help Desk at 18008284040 or Canon Canada Technical. Support at 1800OKCANON. Shipping charges, if any, must be prepaid. If your Toner or Drum is covered by this Inc. or the Dealer from whom you purchased the Toner or Drum. Toner or Drum yield will vary depending on average density of originals copied and other Canon which damage the Toner or Drum or cause abnormally frequent service calls or service problems. Nor does Keep from contact with oxidizing materials. Refer to instructions for handling and storing. Scroll down to easily select items to add to your shopping cart for a faster, easier checkout. Visit the Canon Online Store With USB and parallel connectivity from your device to your ethernet port, the AXIS 1650 offers reliable network printing that can be managed directly from your web browser. <http://www.connecttravelservices.com/uploads/userfiles/dr-200-service-manual.xml>

- **1.0, canon imageclass d780 service manual.**



See your browser's documentation for specific instructions. To install your download, click on the name of the downloaded file. A 30-sheet Automatic Document Feeder can accept originals up to legal size and reproduce letter-size documents at 16 copies per minute (cpm) and legal size documents at 12 cpm. Digital technology, through the touch of a single button, facilitates collating of multipage documents. It offers fast, efficient paper handling through a 500-sheet front-loading paper cassette and a 100-sheet multipurpose tray, which accepts a variety of media for easy, worry-free operation. For added flexibility and user convenience, it supports both parallel and USB interfaces and incorporates a Super G3 fax with all the features you need in a busy office. See the warranty card for full details. Scroll down to easily select items to add to your shopping cart for a faster, easier checkout. You may find documents other than just New Toner, picking up paper, no image prints, paper blank sheet comes out. We keep our list of direct Canon imageCLASS D780 driver and firmware links up to date so they are easy to find when you need them. After you finish reading this guide, store it in a safe place for future reference. Setup Instructions. Reference Guide. Fax Guide. Only for the imageCLASS D780 model. Printer Guide. Copyright. All rights reserved. Pre-Installation Requirements for Canon Facsimile Equipment. A. Location. Supply a suitable table, cabinet or desk. See the Reference Guide for the machine's dimensions and weight. B. Phone Line Requirements. The telephone line should not be reconnected or the power cord plugged in until the problem is completely resolved. Supply a suitable table, cabinet, or desk. B. Order Information. Refer to the Reference Guide for details on the topic of the previous sentence. A setting that remains in effect unless you change it. Alarm indicator. Flashes orange when the machine has a problem such as paper jams, etc. The error message is displayed in the LCD. <http://dycelife.com/userfiles/dr-125-suzuki-manual.xml>

Canon

## Microfilm Scanner 400

INSTRUCTIONS

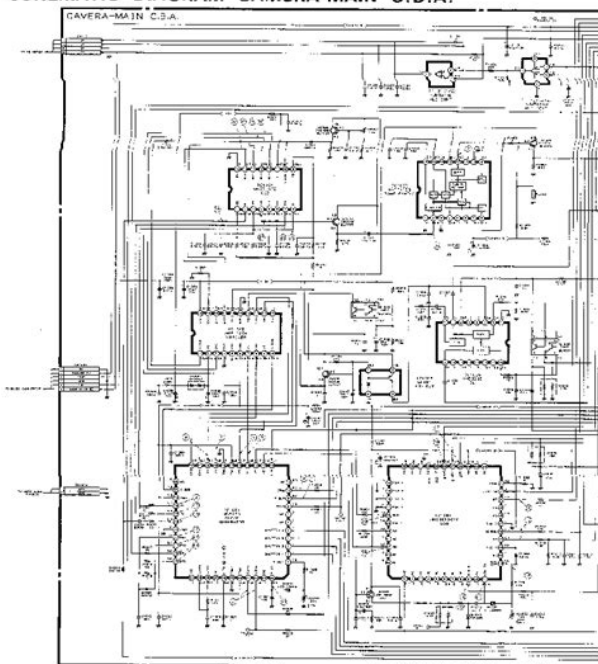


Energy Saver Key Sets or cancels the energy saver mode manually. To dial using these keys, you need to register the number for onetouch speed dialing. I Fax ModeConnecting the Telephone Line and an External Device. Receive Modes FaxTel DRPD ManualTelephone. Machine Only Wall Jack. FaxOnly. You can adjust settings directly via the operation panel of the machine. Detailed instructions are described in this guide. Guidelines for Entering Numbers, Letters and Symbols. Registering InformationOr press Clear to delete all characters you entered.The sender this.Or, press twice.Creating GroupsAdjusting the Quality of Your FaxesSpace. DirectoryDelayed Transmission Book Sending Receive Mode. StartFAX Resolution. Exposure. Clear. Image QualityStartFAX Resolution. Clear speed dialing code you entered.BOOK TX SCAN SIZE Ex LTRCanceling Manual RedialingYou can check the status of sending or receiving fax, or sending reservation.You can send such faxes to another fax machine to be printed.Separate telephone line for fax use only.Telephone connected to the machine.Receiving Faxes. Manual. Tel. AnsMode. Answering machine connected to the machine.The current date and the selected receive mode are displayed.Type of call Telephone Fax Sending document manually Telephone charges begin for the caller. Fax Sending document automatically. The machine answers without ringing.See the fax ring pattern to match that assigned by the telephone OTHER RING TYPE NORMAL RINGThe polling feature allows you to request a document to be faxed to you from another fax machine. The sender only needs to make sure that the document is on his fax machine and ready to be sent. POLLING RX 1.PASSWORD PASSWORD ExWhen the problem is cleared, the machine automatically prints the fax which was stored in memory. Special Features. Special Dialing. This section explains special dialing features, such as dialing through a switchboard, dialing an overseas number, and switching temporarily to tone dialing.

Dialing Through a SwitchboardIf a different paper size is loaded, the 20 transactions. You can also manually set the machine to print to print a report only when an error occurs. You can also set the Reports and Lists. Report or List USERS DATA LISTIf you have a problem with your machine and you cannot solve it by referring to the information in this chapter and in the Reference Guide, contact your service representative.Descriptions Adjusts the volume of the done MP TRAY PAPERSIZE, CAS.Prints the ACTIVITY REPORT. No ACTIVITY REPORT is printed. Sets the transmission functions. ECM error correction mode transmission is turned on or off. All

transmissions are conducted with ECM if the other party's fax supports ECM. Sets the reception functions. ECM error correction mode receiving is turned on or off. All receptions are conducted with ECM if the other party's fax supports ECM. The machine keeps ringing until someone answers the call manually with the handset size. Turn on image reduction. AUTO SELECTION Reducing size is set to auto. FIXED REDUCTION Reducing size is PRINTER SETTINGS 1.RX REDUCTION ON 1.RX REDUCTION. Reset to RX TO MEMORY after replacing the cartridge with a new one. The machine receives Sending and specify the scanning size of either LGL or LTR. This documentation has been designed so that you can easily use your machine to suit your particular needs. Setting up the machine. Setting up paper. Installing Printer Driver. Document and paper handling. Making copies. Maintenance. Troubleshooting feed and copy issues. Sending and receiving faxes. Speed dialing. Troubleshooting fax issues. Printing with CAPT. Checking the status of a print job. No part of this publication may be reproduced, transmitted, transcribed, stored in a retrieval system, or translated into any language or computer language in any form or by any means, electric, mechanical, magnetic, optical, chemical, manual, or otherwise, without the prior written permission of Canon, Inc.

SCHEMATIC DIAGRAM CAMERA-MAIN C.B.A.



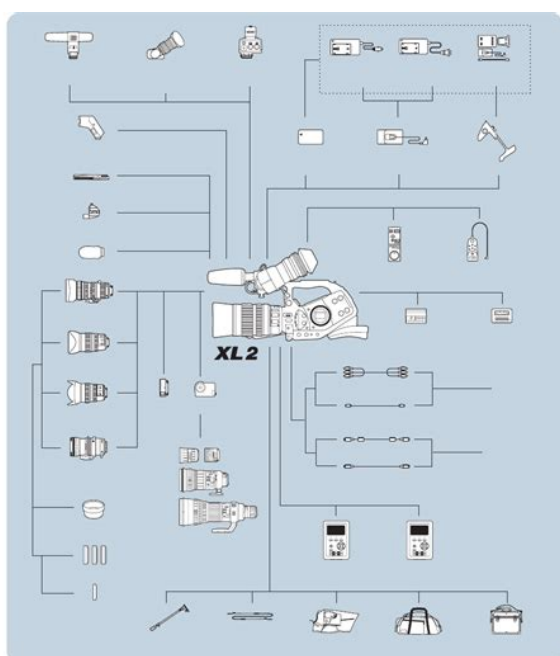
01 May, 1991

<http://fsc1.ru/content/bosch-logixx-1400-express-manual>

This means that the machine does not produce hazardous laser radiation. Since radiation emitted inside the fax is completely confined within protective housings, and external covers, the laser beam cannot escape from the machine during any phase of user operation. CDRH Regulations The Center for Devices and Radiological Health CDRH of the U.S. Food and Drug Administration implemented regulations for laser products on August 2, 1976. These regulations apply to laser products manufactured from August 1, 1976. Note This equipment has been tested and found to comply with the limits for a Class B digital device, pursuant to Part 15 of the FCC Rules. These limits are designed to provide reasonable protection against harmful interference in a residential installation. This equipment generates, uses, and can radiate radio frequency energy and, if not installed and

used in accordance with the instructions, may cause harmful interference to radio communications. However, there is no guarantee that interference will not occur in a particular installation. Do not make any changes or modifications to the equipment unless otherwise specified in the manual. If such changes or modifications should be made, you could be required to stop operation of the equipment. A menu has a title which appears in the LCD. A available menus and the display differ depending on the machine type. This guide shows the display of the imageCLASS D780 model as an example. Call the Canon USA Consumer Information Center between 8 a.m. and 8 p.m. EST, Monday through Friday, except holidays. Call 18008284040. Canon Information Center in Canada Should service be necessary please call the following number for information regarding Personal Copier Authorized Service Facilities. You can also order genuine supplies and accessories for your Copier from Canon. Call us at 18008284040 Canon USA Consumer Information Center 1800OKCANON Canon Canada Information Center Please have your credit card ready.

<http://hcberg.com/images/buffalo-airstation-wbr2-g54-manual.pdf>



Local sales tax, shipping and handling charges are added to each order. Express shipments are available. This list is intended to be a guide only. During use, the machine generates ozone. However, the amount of ozone generated is not enough to affect the human body. Operate the machine only from the type of power source indicated on the machine's label. If these items come into contact with high voltage parts inside of the machine, it may result in a fire or electrical shock. If these items are dropped or spilled in the machine, unplug the power cord immediately with dry hands. If further servicing is required, contact your service representative. Some types of paper available at office supply stores may not be suitable for this machine. If you have any questions about paper and transparencies, consult your dealer or Canon Customer Relations. Doing so may result in copier malfunction. If copying is performed when the cassette is not pushed in completely, it will cause a paper jam. If copy paper is sticking out of the cassette. Sometimes, when you pull out the cassette, paper may stick out, as shown in the illustration below. You can adjust the cassette to hold the following standard paper sizes LGL and LTR. Load the envelope into the multipurpose tray, and select ENVELOPE, then press Set. Setting Up Documents 1 Open the ADF. 2 Place your document face down on the platen glass. Normally, you can make copies in this setting. Making Multiple Copies

1 Use the numeric keys to enter the number of copies you want. When the auto clear function activates, the LCD returns to standby display and the number of copies returns to 01 factory default setting. 100% LTR TEXT 05 1 Press Paper Select to select the paper feeding location cassette or multipurpose tray. Press Additional Functions, then select COMMON SETTINGS, HIGH COPY MODE Then choose ON. Three modes are available for adjusting image quality. Collate Copy The collate copy allows you to sort copies in order of pages.

<http://kampongtourist.com/images/buffalo-airstation-wla-g54c-manual.pdf>



Press Set to make the document come out automatically. In this case, reduce the documents to be scanned. Or, change image quality mode to TEXT. If this happens, change image quality mode to TEXT. Even if you do so, MEMORY FULL may appear depending on the document, and copying may be canceled. In this case, press Set to make the document come out automatically. SELECT JOB T O CANCEL A 0044 1620 0 2 30 No. of copy No. of document Reservation time Reservation No. Cleaning the Exterior Wipe the machine's exterior with a clean, soft, lintfree cloth moistened with water or diluted dishwashing detergent solution. Cleaning the Scanning Area Wipe the scanning area shaded area with a clean, soft, lintfree cloth moistened with water, then wipe with a clean, soft, dry, lintfree cloth. Use a clean soft cloth to wipe the read area clean. Take particular care to clean at the locations where the black lines are appearing on copies. This is what causes black lines on copies. However, although you may be able to use the cartridge longer than indicated above, dark bands might appear on copies. Handling and Storing the Cartridge This section describes the precautions to ensure optimum copy quality. This can adversely effect the quality of your copy images e.g., copies are completely black. Storing Partially Used Cartridges If you remove a cartridge from the machine, store the cartridge as described below. Place the cartridge in its protective bag so that the side with the written instructions is facing upward. Then, place the cartridge into its shipping box. Be sure to securely close the lid of the shipping box. If you do not have the protective bag or shipping box for the cartridge, store the cartridge in a dark location. Recycling Used Cartridges Canon has instituted a worldwide recycling program for cartridges called "The Clean Earth Campaign.

" This program preserves precious natural resources by utilizing a variety of materials found in the used cartridges that are of no further use, to remanufacture new cartridges which, at the same time, keeps the environment cleaner by reducing landfill waste. Complete details concerning this program

are enclosed in each PC Cartridge box. Take adequate precaution when performing internal inspections, to avoid burns or electrical shock. 4 Remove the new cartridge from its protective bag. Save the protective bag. You may need it later when you remove the cartridge from the machine. Make sure that the tab itself is detached from the cartridge. 7 While grasping the cartridge with one hand, firmly and slowly pull the sealing tape tab with the other hand to remove the sealing tape completely. Do not touch the photosensitive drum. Instead, this rapidly growing program returns used cartridges to the manufacturing process, thus conserving an array of resources. Becoming a part of this worthwhile program is easy. When your cartridge is of no further use, simply follow the instructions detailed for U.S. or Canadian residents. We appreciate your support of The Canon Cartridge Recycling Program. Please Note Do not send defective cartridges for replacement. Residents of Alaska and Hawaii Do not use the UPS authorized returning label. For Alaska and Hawaii Canon set up alternative mail service with the U.S. Postal Service. Please call 1800OKCANON to receive U.S. Postal Service merchandise returning label. Option B UPS Store Drop off Take the shipment to a participating UPS Store Center. By using either of the above methods of shipment, your used cartridges will be forwarded to the Canon Cartridge Collection Center at no charge to you. Working to preserve endangered species is a longstanding Canon interest. This donation is utilized in Canada. For further information about The Clean Earth Campaign in Canada, please call or write to Canon. 18006672666 Canon Canada Inc.

<http://dabien.co.kr/wp-content/plugins/formcraft/file-upload/server/content/files/16271b019ebbd0---braun-4169-manual.pdf>

If you do not follow these precautions, the machine may be damaged or the quality of your copy images may be adversely affected. Repacking and Transporting 1 Unplug the power cord. 2 If the machine is connected to a telephone or PC, remove the telephone line or cable. 3 Lift the platen unit lever, slide the platen unit and open the cartridge cover. 4 Pull out the shipping attachment you inserted in the holder when installing the machine. The removed shipping attachment is needed in step 7. 5 Grip the end of the cartridge, and remove it from the machine. Do not lift the machine by any of its attachments. Transporting the Machine by Car Pack the machine, using the original packing material and box. Removing Jammed Paper from Inside the Main Unit When print media jams inside the main unit, the LCD displays REC. If they become dirty, wash them immediately with cold water. Washing with warm water will set the toner and make it impossible to remove the toner stains. Removing Jammed Paper from the Multipurpose Tray When print media jams in the multipurpose tray, the LCD displays REC. This section describes the general messages and ones related to copy functions. LCD Messages Message CHANGE DOCUMENT CHECK DOCUMENT OPEN THE ADF CHECK PRINTER DOCUMENT TOO LONG INCORRECT PAPER SIZE INSTALL CARTRIDGE LOAD LTR SIZE PAPER MEMORY FULL SCANNING MAKING SPACE IN MEM PLEASE WAIT Cause When collating copies or making a 2 on 1 copy of documents using the platen glass, Start is pressed before replacing a document. There is a paper jam in the ADF. An abnormality has occurred in the printer. The document is longer than 14 inches 356 mm. The ADF roller rotates without feeding documents. The size of the paper in the cassette and that specified in the CAS. PAPER SIZE setting of the Additional Functions are different. The cartridge is not installed. No letter size paper is loaded in the cassette.

The machine's memory is full because collate copy or 2 on 1 copy was set when a large document is loaded. Memory is getting low during scanning because the document has many graphics or photos, alternatively 2 on 1 copy is set. Action Replace the document then press Start. If the message remains, unplug the machine and call your service representative. Fan the edge that will feed into the machine first, then tap the edge of multipage documents on a flat surface to even the stack. Load the correct paper size or change the CAS. If MEMORY FULL and PRESS SET KEY appear while scanning documents using the ADF, the document being scanned stops in the ADF. In this case,

press Set to make the document come out automatically. There is a paper jam. A document has been left on the platen glass. The toner inside the cartridge is running low. The paper in the cassette has run out, the toner is running low, paper jams have occurred, or the paper size setting is wrong while the report is printing. No paper is loaded in the cassette or multipurpose tray. An error of some kind has occurred in the machine. Action Slide the platen unit to the original position. Remove or change the document from the platen glass. Unplug the machine and wait for 10 minutes, then plug it in again. This keeps the sheets of paper from sticking together. Load them in the multipurpose tray. They will cause a paper jam. Please use transparencies recommended by Canon. Repeated paper jams occur. PAPER are displayed alternately. If paper is loaded, the copying resumes automatically. If the problem is fixed, the Alarm indicator will turn off, and the LCD will return to standby mode. If the Alarm indicator remains lit, unplug the machine, and call your service representative. Printout does not match paper size. Insert the power cord straight into the power cord connector on the left side of the machine. Do not insert it at an angle.

Otherwise, the machine may not be properly connected to the power source and may not turn on. Nothing appears in the LCD. If the LCD remains blank, unplug the machine, and call your service representative. To restore the machine from the energy saver mode, press Energy Saver. The letter "E" and numbers appear in the LCD. If the message is still displayed, unplug the machine and call your service representative. A available menus differ depending on the machine type. OFF Select when you do not select the size of paper in the multipurpose tray. FREE SIZE Free size SET ON LOADING Select when specifying the paper size each time you use the multipurpose tray. The envelope type can also be specified in SET ON LOADING. ON LTR, STMT, CUSTOM PAPER SIZE length and width can be specified in millimeters, A4, B5, A5, LGL CAS. PAPER SIZE Select the size of paper loaded in the cassette. PLAIN PAPER, TRACING PAPER, TRANSPARENCY, SPECIAL PAPER 1, SPECIAL PAPER 2 If you select a paper type other than PLAIN PAPER and select the multipurpose tray with Paper Select, T will appear on the standby display. HIGH COPY MODE Set this mode when copy images are partly missing or shaded. TONER SAVER MODE Sets the toner save mode. ON The toner save mode is turned on. OFF The toner save mode is turned off. PRT FEED INTERVAL Select LONG INTERVAL to avoid the following cases. When copy images are partly missing or shaded. Black bands appears, when successively making copies from photo originals containing halftones on L TR, LGL, A4 or B5size paper. LONG INTERVAL Printing is performed at a slightly longer feeding interval while adjustments are made to the drum. NORMAL INTERVAL Printing is performed at a normal feeding interval. DISPLAY LANGUAGE Select the message language. MANUAL The exposure is adjusted manually. ON The auto sort function is turned on. OFF The auto sort function is turned off. MAX. SCAN LENGTH Selects the maximum book scanning length.

330 mm Select when not using the legal size document when the document size is smaller than the letter or A4 size. 356 mm Select when using the legal size document. PAPER SIZE GROUP The paper size group can be selected. If the paper size group is changed, the preset copy ratios, 2 on 1 copy ratio and 2 on 1 paper size will change. INCH Preset copy ratios 50%, 64%, 78%, 100%, 129%, 200%. 2 on 1 copy ratio 64%, LTR size. A Preset copy ratios 50%, 70%, 100%, 141%, 200%. 2 on 1 copy ratio 70%, A4 size. AB Preset copy ratios 50%, 70%, 81%, 86%, 100%, 115%, 141%, 200%. 2 on 1 copy ratio 70%, A4 size. SHARPNESS Black and white of an image can be sharpened. When you want to make characters and lines clear, select a big number. ON The auto clear function is turned on. 1 to 9 MIN. 2 MIN. OFF The auto clear function is turned off. ENERGY SAVER The energy saver mode can be set. ON The energy saver mode is set. 3 to 30 MIN. 5 MIN. OFF The energy saver mode is turned of f. DAILY TIMER SET The time of each day to execute the energy saver function can be set. 1.SUN, 2.MON, 3.TUE, 4.WED, 5.THU, Enter the desired time for the desired day. You can adjust 6.FRI, 7.SAT the time by 1 minute in the range from 0000 to 2359. CLEAN ADF ROLLER Select when the documents have black streaks and appear dirty after they were fed out of the ADF. Some types of paper available at office supply stores may not be suitable for this copier. Please

use the box above to search for any other information. Ordering Information. MFP MFP Cartridge imageCLASS D780 imageCLASS D760 Canon L50 8979A001 8979A012 6812A001. For More Information Visit Tone Key Connects to information services that accept tone dialing only, even if you encounter a problem with the latest technology to provide troublefree operation. Also, if machines operation, try to solve it by using a rotary pulse. Set Key Determines the contents you think your machine needs. Telephone connected to the machine.

It receives faxes automatically and disconnects voice calls. Once you distinguish by checking the standby display. Receiving Faxes. Different Ways to Receive a Fax. The machine provides you to have to manually activate reception of the fax. However, there is not in the manual. These limits are designed to laser products manufactured from that the machine does not produce hazardous laser radiation. If such changes or modifications should be. Can I get a free service manual for canon imageclass d1150 please Thanks in advance Posted by repair72035 3 years ago Canon imageCLASS D1150 Answers Canon Imageclass D661 Service Manual I am trying to find a service manual for a Canon Imageclass D661. Can someone help me Posted by thecartridgedoctors 4 years ago Canon imageCLASS D661 Answers Canon Service Manual Pixima Mx850 Is there a service manual for the MX850 available. Thank you, Connect the power plug to the wall outlet. Disconnect the power plug from the outlet, and insert again. Make sure there are. User sentiment in Forums. Download to User Guide and Manual Free download of Canon imageCLASS canon image class d780 service manual D780 User Manual. Troubleshooting help from experts and users. Ask our large community for support. Canon ImageClass D780 L50 6812A001AA Toner Cartridge Item model number L50. All of our toner cartridges come with 1 Year Money back guarantee. Recent User Activity. You might be interested in the following threads What multifunction. The copier features. User sentiment in Forums. Download to User Guide and Manual Free download of Canon imageCLASS canon image class d780 service manual D780 User Manual. The copier features. Available for All of the Canon IMAGECLASS D780 Copiers Canon IMAGECLASS D780 Stock 8006349329 Copier Parts, Canon IMAGECLASS D780 Copier Supplies, Canon IMAGECLASS D780 Copier Manuals, Are All Available. Call the World of Fax and Copiers Order Hotline at Leading Supplier of Canon IMAGECLASS D780 Copier parts.

We Stock all parts for Canon IMAGECLASS D780. If you Call 8006349329 and we will help Thank you for your business. Canon IMAGECLASS D780 service manual, Canon IMAGECLASS D780 parts manual, Canon IMAGECLASS D780 owners manual tray, Canon IMAGECLASS D780 Maintenance Kit. Canon IMAGECLASS D780 Developer Unit, Canon IMAGECLASS D780 Bearing, Canon IMAGECLASS D780 Bearings, Canon IMAGECLASS D780 Bushing, Canon IMAGECLASS D780 Bushings. Canon IMAGECLASS D780 Belt, Canon IMAGECLASS D780 Blade, Canon IMAGECLASS D780 Blades, Canon IMAGECLASS D780 Drum Blade, Canon IMAGECLASS D780 Developer Blade, Canon IMAGECLASS D780 Clutch. Canon IMAGECLASS D780 Corona, Canon IMAGECLASS D780 Charge, Canon IMAGECLASS D780 Transfer belt, Canon IMAGECLASS D780 transfer corona Separation, Canon IMAGECLASS D780 Fan. Canon IMAGECLASS D780 Fuser, Canon IMAGECLASS D780 Fuser Roller, Canon IMAGECLASS D780 Heat Roller, Canon IMAGECLASS D780 Pressure. Roller, Canon IMAGECLASS D780 Upper Roller, Canon IMAGECLASS D780 Lower Roller, Canon IMAGECLASS D780 Thermistor, Canon IMAGECLASS D780. Thermostat, Canon IMAGECLASS D780 Picker. Finger, Canon IMAGECLASS D780 Picker Fingers, Canon IMAGECLASS D780 Lamp, Canon IMAGECLASS D780 Fuser Lamp, Canon IMAGECLASS D780 Heat Lamp, Canon IMAGECLASS D780 Thermal Fuse. Canon IMAGECLASS D780 Thermal. Switch, Canon IMAGECLASS D780 Fuser Assy, Canon IMAGECLASS D780 Fuser Unit, Canon IMAGECLASS D780 Fuser Unit, Canon IMAGECLASS D780 Fixing Unit. Canon IMAGECLASS D780 Fixing. Assembly, Canon IMAGECLASS D780 Fixing Assy, Canon IMAGECLASS D780 Heater Unit, Canon IMAGECLASS D780 Drum, Canon IMAGECLASS D780 Drum Unit. Canon IMAGECLASS D780 Cleaning. Blade, Canon IMAGECLASS D780 DV Unit, Canon IMAGECLASS D780 Developer Assembly, Canon IMAGECLASS D780 toner

motor, Canon IMAGECLASS D780. Motor, Canon IMAGECLASS D780 Drive Motor, Canon IMAGECLASS D780 Drive Gear, Canon IMAGECLASS D780 Hear Roller Gear, Canon IMAGECLASS D780.

Drive Assembly, Canon IMAGECLASS D780 Drive Unit, Canon IMAGECLASS D780 Drive Gear. Assembly, Canon IMAGECLASS D780 Idler Gear, Canon IMAGECLASS D780 Gear that Drives the Fuser, Canon IMAGECLASS D780 Spring. Canon IMAGECLASS D780 Feed. Roller, Canon IMAGECLASS D780 Pickup Roller, Canon IMAGECLASS D780 Registration Roller, Canon IMAGECLASS D780 Transfer Roller, Canon IMAGECLASS D780. Drum Only, Canon IMAGECLASS D780 Adf. Roller, Canon IMAGECLASS D780 Adf Pickup Roller, Canon IMAGECLASS D780 Adf Sep Roller, Canon IMAGECLASS D780 Adf Sep Pad, Canon IMAGECLASS D780 Adf Separator Pad. Canon IMAGECLASS D780 Adf Motor, Canon IMAGECLASS D780 Adf Gear, Canon IMAGECLASS D780 Adf Assembly, Canon IMAGECLASS D780 Adf Assy, Canon IMAGECLASS D780 Adf Feed Kit. Canon IMAGECLASS D780 Adf Rebuild Kit, Canon IMAGECLASS D780 Fuser Rebuild Kit, Canon IMAGECLASS D780 Paper Feed Kit, Canon IMAGECLASS D780 Cassette Feed Kit. Canon IMAGECLASS D780 Cassette Rebuild Kit, Canon IMAGECLASS D780 Adf. Catch Tray, Canon IMAGECLASS D780 Receiving Catch Tray, Canon IMAGECLASS D780 Document Return Tray, Canon IMAGECLASS D780 Document Delivery Tray. Canon IMAGECLASS D780 Copy Output Tray, Canon IMAGECLASS D780 Receive Tray, Canon IMAGECLASS D780 Fax Tray, Canon IMAGECLASS D780 Transfer Assembly. Canon IMAGECLASS D780 Transfer Assy, Canon IMAGECLASS D780 Upper Roller, Canon IMAGECLASS D780 Upper Fuser Roller, Canon IMAGECLASS D780 HR Gear, Canon IMAGECLASS D780. Doc Feed Roller, Canon IMAGECLASS D780 Document Feed. Roller, Canon IMAGECLASS D780 Paper Pickup Roller, Canon IMAGECLASS D780 Paper Feed Roller, Canon IMAGECLASS D780 Exit Roller, Canon IMAGECLASS D780. Exit. Assy, Canon IMAGECLASS D780 Exit. Assembly, Canon IMAGECLASS D780 Maintenance Kit, Canon IMAGECLASS D780 mtce tray, Canon IMAGECLASS D780 Fuser Maintenance Kit. Canon IMAGECLASS D780 Adf Maintenance Kit, Canon IMAGECLASS D780 Reset, Canon IMAGECLASS D780 Fuser Reset, Canon IMAGECLASS D780 Fax Machine Reset, Canon IMAGECLASS D780.

<https://formations.fondationmironroyer.com/en/node/9476>