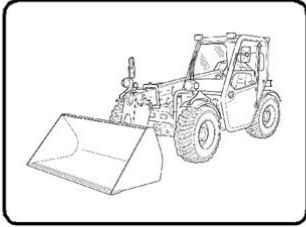


Carrier service tool 5 user manual



Operation & Maintenance Manual V417 VersaHANDLER® Telescopic Tool Carrier (TTC)

S/N AC1C13000 & Above (With Cab)
S/N AC1D13000 & Above (With Canopy)



Dealer Copy - Not for Resale

888675 (2-15)
1 of 152

Printed in U.S.A.



© Bobcat Company 2010

File Name: Carrier service tool 5 user manual.pdf
Size: 3887 KB
Type: PDF, ePub, eBook
Category: Book
Uploaded: 1 May 2019, 15:47 PM
Rating: 4.6/5 from 734 votes.

Download Now!

Please check the box below to proceed.



I'm not a robot



reCAPTCHA
Privacy - Terms

Book Descriptions:

Carrier service tool 5 user manual

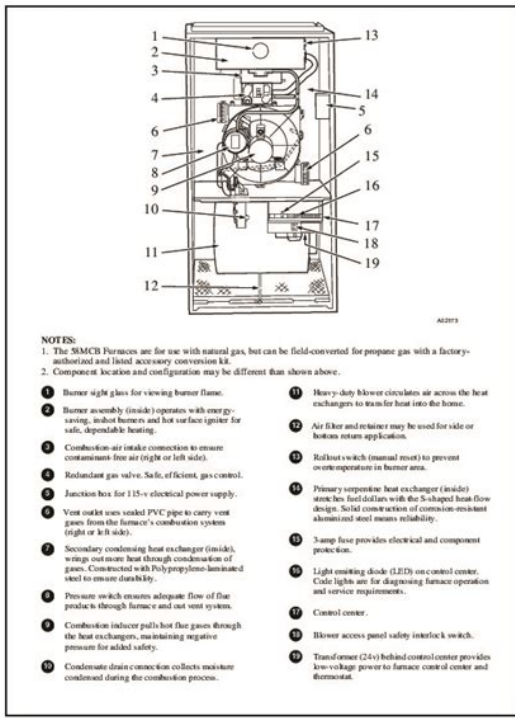


Eight types of reports can be generated from interrogated data. It can also be used to extract data from units with ML2i controllers using Databank software. Find an expert. Carriers diagnostic standard tier display tools such as Navigator or Scrolling Marque can be used with the PremierLink controller. When used as part of the CCN, other devices such as the CCN data transfer, Linkage Thermostat, or Comfort Controller can read data from or write data to the retrofit controller. A user interface is not required for daytoday operation. The PremierLink controller is a NEC National Electrical Code Class 2 rated device. The PremierLink controller has an allowable control set point range from 40 to 90 F 4 to 32 C for heating and 45 to 99 F 7 to 37 C for cooling. Bus length may not exceed 4000 ft 1219 m, with no more than 60 devices on any 1000 ft 305 m section. Optically isolated RS485 repeaters are required every 1000 ft 305 m. Status and control data is transmitted at a baud rate of between 9600 and 38.4K. A green LED will indicate activity on the communication port and a red LED will indicate status of processor operation. A user interface is not required for daytoday operation. The PremierLink controller is a NEC National Electrical Code Class 2 rated device. The PremierLink controller has an allowable control set point range from 40 to 90 F 4 to 32 C for heating and 45 to 99 F 7 to 37 C for cooling. Bus length may not exceed 4000 ft 1219 m, with no more than 60 devices on any 1000 ft 305 m section. Status and control data is transmitted at a baud rate of between 9600 and 38.4K. A green LED will indicate activity on the communication port and a red LED will indicate status of processor operation. ARP changes coming soon. This notice is dismissible, click the top right X and it will vanish. The ARP Forum will become Pro Member only on September 1, 2020. If you want to continue to view and reply in the ARP you must fill out the Pro application found

here. <http://www.olikon.it/public/anutelNewsProdotti/eclipse-2000-elliptical-owners-manual.xml>

- **carrier service tool 5 user manual, carrier service tool 5 user manual, carrier service tool 5 user manual pdf, carrier service tool 5 user manual download, carrier service**

tool 5 user manual free, carrier service tool 5 user manual online.



To learn about our use of cookies and how you can manage your cookie settings, please see our Cookie Policy. By continuing to use the website, you consent to our use of cookies. If you have any problems with the registration process or your account login, please contact support. Found the version IV though, which is running in the DOS ThanksDo you have any questions about the carrier nsvI just want a literature to refresh me. I have issue with this site that our tech was. This site has only 2 IO controllers. But he was able to see the values from both controllers. But the supply air that sometimes read 0. And helping him over the phone is hard. I sure keep you in mind. Please email me the file. I doubt that you'll find the information you need there. CCN controllers don't use DIP switches for addressing they are software set. If they are 6400s, those DIP switches are for setting the addresses for the expansion modules. If someone has messed with those, it might explain the readings, as sensor failures with CCN are either 40 open circuit or 255 dead short. You can try going to commercial.carrier.com to look for the manual as the 6400 manual is almost 800 pages. You are looking for document number 808891r1I doubt that you'll find the information you need there. I am having trouble connecting to a PremierLink board and want to study up. Thanks. I'm more looking for literature on the CCN structure and how addressing and all of that works. Thank you in advance Post Them Here All rights reserved. They have always added value to our projects and we look forward to many more years of working together to provide successful construction projects. WhitingTurner and Research Air Flo have developed a relationship built on excellence, integrity, and a continuous drive to succeed and delight our customer. They have continuously overcome all obstacles put in their way to bring in test and balance ahead of schedule. Our team looks forward to future endeavors with Research Air. <http://www.jastrzab.gmina.waw.pl/pliki/eclipse-2006-manual.xml>

CAUTION: 38CQ unit coils will hold only factory-supplied amount of refrigerant. Additional refrigerant may cause units to relieve pressure thru suction pressure relief valve (indicated by a sudden rise of suction pressure) before suction pressure reaches 2 psig. If this occurs, shut off unit immediately, frostbeat suction valve and vent remaining pressure to atmosphere.

Unit Controls and Safety Devices

HIGH-PRESSURE RELIEF VALVE is located in compressor. Relief valve opens at a pressure differential of approximately 600 psi between suction (low side) and discharge (high side) to allow pressure equalization.

INTERNAL CURRENT AND TEMPERATURE SENSITIVE OVERLOAD resets automatically when internal compressor motor temperature drops to a safe level (overloads may require up to 45 minutes to reset). When an internal overload is suspected of being open, check by using an ohmmeter or continuity tester. If necessary, refer to Carrier Standard Service Techniques Manual, Chapter 2, for complete instructions.

LIQUID LINE LOW - PRESSURE SWITCH (LLPS) is connected in liquid line to work with compressor internal thermostat in providing load-charge protection during the heating cycle. Control is mounted on liquid line.

With a high-side leak, pressure gradually decreases until low-pressure control stops the compressor. (Low-pressure control settings are shown in Table 8.)

Table 8 — Pressure Switch Settings

UNIT 38CQ	LIQUID LINE LOW-PRESSURE SWITCH	
	Cut-in (psig)	Cut-out (psig)
013	20 ± 5	5 ± 3
020		
027		
033		
039		
044		
048		

With a low-side leak there is always some pressure in the liquid line. However, compressor motor temperature increases because of insufficient suction gas cooling. This causes internal thermostat to actuate and stop compressor. When compressor stops, system pressure equalizes and contacts on pressure control open. The compressor cannot restart until leak is repaired and system recharged.

CRANKCASE HEATER is connected across line side of contactor and operates continuously.

The purpose of the heater is to keep the crankcase warm during the off cycle and thus prevent dilution of the oil with refrigerant. This assures good lubrication and prevents loss of oil from crankcase during start-up.

If the electrical disconnect switch to the outside unit has been off for an extended period of time, the crankcase heater should be energized for 24 hours before starting the compressor.

DEFROST CONTROL, consisting of a defrost timer, defrost thermostat and defrost relay, interrupts normal system heating operation every 90 minutes to defrost outdoor coil, if the coil saturated suction temperature indicates freezing temperatures. Defrost control simultaneously stops outdoor fan, energizes reversing valve solenoid to return system to cooling cycle (outdoor unit as condenser, indoor unit as evaporator), and activates accessory electric heater.

For the heat pump to defrost, 2 conditions are necessary:

1. Defrost timer contacts must be closed.
2. Refrigerant temperature from outdoor unit must be cold enough to cause defrost thermostat contacts to close. Contacts close at 31 (±4) F.

Every 90 minutes of elapsed running time, the defrost timer contacts close for 10 seconds. If the defrost thermostat contacts are closed, the unit defrosts. The defrost timer limits defrosting period to 10 minutes. Normally the frost is removed and the defrost thermostat contacts will open to terminate defrosting before 10 minutes have elapsed. Defrost thermostat contacts open at 80 (±6) F liquid refrigerant temperature. When defrosting is terminated, the outdoor fan motor is energized and reversing valve solenoid is de-energized returning unit to heating cycle.

HEAT PUMP CIRCUITS shown in Fig. 32 are refrigerant flow diagrams for heating and cooling cycles.

AccuRater™ (Bypass Type) Servicing — See Fig. 33 for bypass type AccuRater components. The piston has a refrigerant metering hole thru it. The retainer forms a stop for the piston in the refrigerant bypass mode, and a sealing surface for liquid line flare connection. To check, clean or replace piston:

1. Shut off power to unit.
2. Pump unit down using Pumpdown Procedure described previously.
3. Remove liquid line flare connection from AccuRater.
4. Pull retainer out of body being careful not to scratch flare sealing surface. If retainer does not pull out easily, carefully use vise grips or pliers to remove retainer.
5. Slide piston out by inserting a small soft wire, with small kinks, thru metering hole. Ensure metering hole, sealing surface around piston cones and fluted portion of piston are not damaged.

The preparation, field work, and final reporting for our projects makes the entire team look. It gives me great pleasure to endorse Research Air Flo, Inc. I enjoy using Research Air Flo. I have been using Research Air Flo since the business was started. They are responsive to our project needs including solving problems that can occur with existing mechanical systems over time. Research Air Flo is also very professional, clean, and responsible which makes them a perfect fit for our class A office building and. The guys at Research Air Flo are great to work with. They provide great assistance throughout the project. Starting at providing accurate and timely bids. Being a team member during the test and balance process, they bring attention to issues as they come up for quick resolution, which reduces punch lists and. The technicians I have worked with are very competent and know what it takes to get the job completed on time and in an efficient manner. Their office personnel provide excellent support for the technicians in problem. These projects presented challenging schedules with very precise operating parameters for temperature and air flows in which your team of professionals were prepared for and quietly met the schedule while providing. I have worked with Research Air Flo in various capacities for nearly 10 years. They offer top notch quality and timely, friendly service. Joel and Kevin are completely dependable; their work is top notch, timely, professionally presented, and. We consider your firm to be a valuable member of our team. Your continued performance shows how much emphasis you put on. They have been professional partners in every aspect of our working relationship and help owners get what they pay for. RAF personnel always support our commissioning team with highly qualified individuals that are motivated and excel at what. I appreciate your professionalism and user friendly interaction with me, our architects and staff. Much to often I have.

Research Air Flo is there when needed and has outstanding employees that are very knowledgeable about their field of work. I have enjoyed the experience of working with them and will continue to. We have used RAF on some of our most difficult, complex projects due to their extensive knowledge in Lab and Hospital construction. They have always added value to our projects and we look forward to many more years of working together. Our business is based on relationships. Relationships are formed over time with consistently excellence performance. We are fortunate to have partners like Research Air Flo that share this same vision and are always there to support us. Research Air Flo has provided Test and Balance, RetroCommissioning, troubleshooting and Investigative Services for

numerous HPD projects over the past three decades. Research Air Flo's experience and professionalism has contributed to the success of multiple projects many of which were of high complexity and mission critical. HPD considers Research Air Flo our. I appreciate the professionalism and effectiveness that the company brings to the table. Research Air Flo always approaches each project with an "All In" attitude. I would recommend them to anyone looking for a quality. I want to personally thank you and Matt Lee for helping our company get the past several projects completed in a timely and very cost effective manner. By generating a list of any deficiencies and getting it out quickly, we avoid project completion delays that can often occur. Your field technicians are. In my personal experiences with TAB contractors, I've come to know Research Air Flo as a top choice for projects ranging from designbuild, plan and spec, and. Working with Research Air Flo has been a great experience. Their professionalism, collaboration, and commitment to getting it right has contributed to the success of several large complex projects.

5

Deflection in inches	Min. Tension (lbf.)	Max. Tension (lbf.)
0.17	3.0	6.0

Ensure the pulley and sheave are properly aligned and the motor and/or screws are adequately tightened prior to restarting the compressor.

CAUTION Improper pulley/sheave alignment and belt tension can result in motor overload, excessive vibration, and premature belt and/or bearing failure.

To prevent these problems from occurring, ensure the pulley and sheave are aligned and belt tension is satisfactory after installing new belts or re-tensioning existing belts.

TANK INSPECTION

The life of an air receiver tank is dependent upon several factors including, but not limited to, operating conditions, ambient environments, and the level of maintenance. The exact effect of these factors on tank life is difficult to predict; therefore, Ingersoll-Rand recommends that you schedule a certified tank inspection within the first five years of compressor service. To arrange a tank inspection, contact the nearest I-R Air Center or distributor, or call 1-800-448-6267.

If the tank has not been inspected within the first 10 years of compressor service, the tank must be taken out of service until it has passed inspection. Tanks that fail to meet requirements must be replaced.

WARNING Failure to replace a rusted air receiver tank could result in air receiver tank rupture or explosion, which could cause substantial property damage, severe personal injury, or death. Never modify or repair tank. Obtain replacement from service center.

Follow the procedures outlined below to correctly set and measure belt tension.

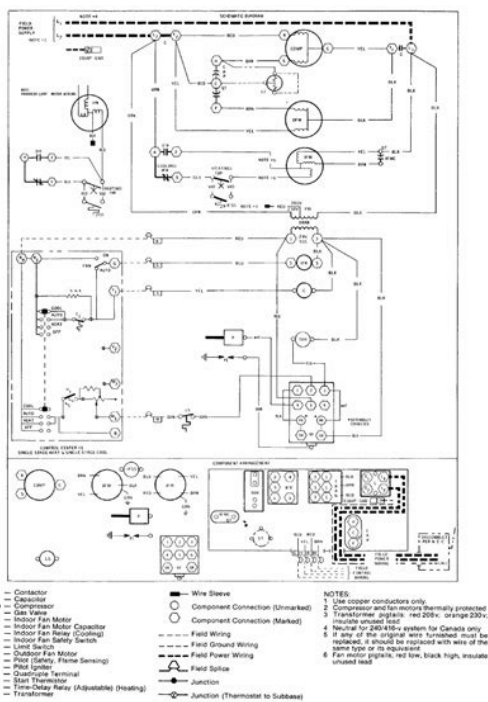
1. Lay a straight edge across the top outer surface of the belt drive from pulley to sheave.
2. At the center of the span, perpendicular to the belt, apply pressure to the outer surface of the belt with a tension gauge. Force the belt to the deflection indicated in the table at right. Compare the reading on the tension gauge to the following table.

<https://www.thebiketube.com/acros-bosch-vision-500-washer-repair-manual>

From the procurement of the project through the final reports, the team at RAF have been a great asset and trusted team member. Unlike many of the other Test and Balance contractors, they don't just. Their expertise, positive attitude, and timeliness creates a successful work environment that we have enjoyed for the past few years now. We can always rely on competitive pricing and thorough testing and balancing procedures. They go the extra mile to be partner when trouble shooting problems and supporting the project when it is necessary. Working with Research Air has made my job as a project manager much easier. Obviously, when a TAB contractor comes on a job site, the project is near the end. The G.C. typically is at wits end trying to close the project and turn it over to the owner. Research Air Flo has the most knowledgeable technicians and support staff I have worked with. Their work is thorough and complete and you know when they give you the report you can rest assured they performed the work to the listed results in the report. No information is missing and no short. Project Manager Maxair Mechanical, Inc. As an engineer and contractor, I have found that Research Air Flo really shows their added value when you have difficult situations to address. They are willing to roll up their sleeves and get deep into any situation and never expect

someone to go through the problem solving effort by themselves. Research Air Flo has provided excellent service in all of these situations and we will continue to call on them as. McKenneys, Inc. has worked extensively with Research Air Flo since its founding. They are highly collaborative and work together well with us to ensure that all systems are functioning as intended. They are very responsive to the scheduling needs of a project and always demonstrate commitment to get the job completed on.

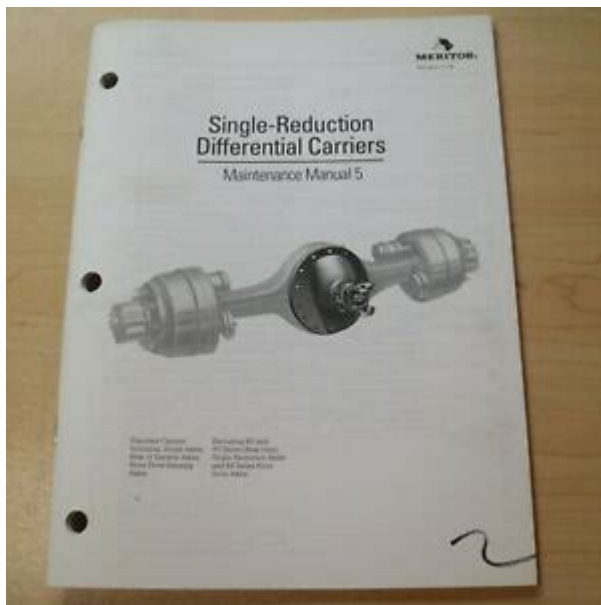
<https://www.dermatina100.gr/images/caldigit-vr2-manual.pdf>



My sole responsibility is to ensure the timely completion of the Mechanical, Electrical and Plumbing installations on Laboratories and Hospitals in the Southeast for McCarthy Building Companies, Inc. Research Air Flo has proven time and again with their. I would like to thank you for the service you provide for us. Year after year you have gave us and continue to give us excellent service. From quoting jobs to performing air balance. Your field guys are very knowledgeable of the HVAC field and helped us in problem solving on several. Through the years they have handled many of our projects. Throughout the last seven years we have worked both directly and indirectly with Research Air Flo. Most of the interaction has been through a General Contractor or Mechanical Contractor while having Research Air Flo perform the air balance on the distribution system of many Tenant buildouts at our building. Your team coordinates, communicates, and schedules in a timely manor which helps greatly with the project flow. The success of any team is dependent upon its members. Over the years, we have been fortunate enough to have teamed up with Research Air Flo on numerous successful projects. Everyone we have met within their organization is professional, honest, and trustworthy. We look forward to future opportunities to partner with Research. I have only had the privilege of working with Research Air Flo over the past three years, however It's has been a very pleasurable experience. You and your team have always striven your best to meet the challenges and demands that this industry imposes on all of us. They attend construction and commissioning. It has been a pleasure working with Matthew Lee and his crew. So far everything has worked out perfect. I look forward to working with Research Air Flo in the future on my projects. We offer a full time staff of engineers to review reports and insure a quality report is

provided to our clients in a timely fashion.

<http://detsindustrial.com/images/caldera-utopia-manual.pdf>



The Network Service Tool is a portable interface device that allows the user to change system setup and set points from a zone sensor or terminal control module. During startup, the Carrier software can also be used to verify communication with PremierLink controller. NOTE All setup and set point configurations are factory set and fieldadjustable. NOTE If optional electric heat is installed, Heat Type must be changed to "1" electric heat from default of "0" gas heat. The address may be set at this time. Make sure that Service Tool is connected to only one unit when changing the address. To enable the feature again, the switch must be put back to the 0 position and power must be restored; this prevents subsequent resets to factory defaults if the switch is left at position 1. At this point, no action occurs, but the controller is now ready for the memory to reset. Remove power to the controller again and move the switch from position 0 to position 1. This time, when power is applied, the memory will reset to factory defaults. The control ler address will return to bus 0 element 31, indicating that memory reset occurred. The Navigator can be used to configure and perform service diagnostics on machines equipped with the PremierLink Controller. See Fig. 31. The Navigator is capa ble of displaying four 24character lines of information on a backlit liquid crystal display. The Navigator has four functional. This page requires Javascript. Modify your browsers settings to allow Javascript to execute. See your browsers documentation for specific instructions. To install your download click on the name of the downloaded file.The driver may be included in your OS or you may not need a driver.

Recommended Drivers File Name Date File Size Optional Drivers File Name Date File Size
Recommended Software File Name Date File Size Optional Software File Name Date File Size
Recommended Manuals File Name Date File Size Optional Manuals File Name Date File Size During the relevant warranty period, Canon shall, in its sole discretion and without charge, repair or replace any defective part with a new or comparable rebuilt part or exchange the Product with a new or rebuilt Product. Warranty replacement shall not extend the warranty period of the defective Product. This warranty shall not extend to consumables such as feed rollers, separation rollers, etc. as to which there shall be no warranty or replacement. This warranty shall only apply if this Product is used in conjunction with compatible computers, peripheral equipment and software, as to which items Canon shall have no responsibility. NONCANON Brand COMPUTERS, PERIPHERAL

EQUIPMENT and SOFTWARE WHICH MAY BE DISTRIBUTED WITH THE PRODUCT ARE SOLD AS IS, WITHOUT WARRANTY OF ANY KIND BY CANON, INCLUDING ANY IMPLIED WARRANTY OF MERCHANTABILITY OR FITNESS FOR A PARTICULAR PURPOSE. The sole warranty, if any, with respect to such nonCanon brand item is given by the manufacturer or producer thereof. THIS WARRANTY APPLIES TO PRODUCTS PURCHASED AND USED IN THE U.S.A. AND CANADA ONLY. CANON U.S.A., INC. One Canon Park Melville, NY 11747 CANON CANADA, INC. 6390 Dixie Road Mississauga, Ontario L5T 1P7 Canada Canon warrants the Product and Canonbrand accessories designed for use with the Product to be free from defects in workmanship and material under normal use and service for a period of three years after delivery to the original purchaser "Purchaser" by Canon or its authorized dealer or reseller. During the relevant warranty period, Canon shall, in its sole discretion and without charge, repair or replace any defective part with a new or comparable rebuilt part or exchange the Product with a new or rebuilt Product.

<https://fatheragneliti.com/wp-content/plugins/formcraft/file-upload/server/content/files/1627367a430c87---brinkmann-electric-smoker-grill-manual.pdf>

To arrange for service for the Product under warranty, please call NONCANON Brand COMPUTERS, PERIPHERAL EQUIPMENT and SOFTWARE WHICH MAY BE DISTRIBUTED WITH THE PRODUCT ARE SOLD AS IS, WITHOUT WARRANTY OF ANY KIND BY CANON, INCLUDING ANY IMPLIED WARRANTY OF MERCHANTABILITY OR FITNESS FOR A PARTICULAR PURPOSE. The sole warranty, if any, with respect to such nonCanon brand item is given by the manufacturer or producer thereof. Installation Instructions. NOTE Read the entire instruction manual before starting the installation. Indoor Thermostat Control Options. Information in these installation instructions pertains only to The qualified Refer to the individual instructions Follow all safety codes. Wear safety glasses, protective clothing, Have fire extinguisher available. Read these instructions Consult local building codes and In Canada, refer to current editions of the Canadian electrical code Control. Standard. HP Thermostat Electrical components may hold charge. DO NOT remove Never use air or gases containing Pressurized Use care and Puron R refrigerant systems operate at higher pressures than Before installing, modifying, or servicing system, main There may be more than 1 disconnect switch. Lock out and This is the safety alert symbol. When you see this symbol on the unit and in instructions or DANGER identifies CAUTION is used to identify unsafe Inverter Cover. IMPORTANT The inverter cover should NEVER be removed Service Manual for details on field replaceable parts. LM10KK003 is available to minimize noise due to gas pulsations. There can be no deviation. Conditioners and Heat Pumps Using Puron. Refrigerant to obtain Step 1 — Check Equipment and Job Site. Unpack Unit. Move to final location. Remove carton taking care not to damage This unit employs one louver spacer on each of the four sides to The louver spacers are If proper lineset routing techniques are not followed, variable Fig.

http://batterseataxi.com/survey/userfiles/files/bpx500_1-service-manual.pdf

2 Louver Spacer Location The outdoor unit contains the correct amount of refrigerant charge Adjust refrigerant charge by adding or removing the charge The user interface UIOD for all 25VNA8 IMPORTANT Always install the factory supplied liquid line File claim with shipping company prior to installation if shipment Locate unit rating plate on unit corner Check rating plate to be sure unit matches job specifications. Step 2 — Install on a Solid, Level Mounting Pad. If conditions or local codes require the unit be attached to pad, tie Refer to unit mounting pattern in Fig. 3 For hurricane tie downs, contact distributor for details and PE On rooftop applications, mount on level platform or frame. Place Consult local Roof mounted units exposed to winds above 5 mph may require System Air Conditioners and Heat Pumps Using Puron Refrigerant for wind baffle construction. When installing, allow sufficient space for airflow clearance, Allow 24 in. 609.6 mm On rooftop applications, locate unit at least 6 in. 152.4 mm above Locate the unit in such a way that it is stable in all Step 6 — Make Piping Connections Base pan 2 Places Relieve pressure and recover all

refrigerant before system Use all service ports and open all View From Top Do not leave system open to atmosphere any longer than POE oil in compressor is Always keep Fig. 3 Tiedown Knockout Locations. Step 4 — Operating Ambient The system may operate in cooling up. Capacity” table. Low ambient cooling operation is not currently If ANY refrigerant tubing is buried, provide a 6 in. 152.4 Refrigerant tubing lengths Do not bury lines longer than 36 in. Step 5 — Elevate Unit. Elevate unit per local climate and code requirements to provide Follow the pipe sizing recommendations in the 25VNA8 Product This unit shall not be installed with Refer to Table 1 for field tubing diameters. No additional Diameter Diameter. Connection. Diameter. Max Rated. Minimum Tube. Diameter Unit. Sweat Connections. Install Liquid Line Filter Drier Indoor. Refer to Fig.

4 and install filter drier as follows Check refrigerant charge NOTE If the indoor furnace coil width is more than the furnace S Use a brazing shield. S Wrap service valves with wet cloth or heat sink material. Use refrigerant grade tubing. Service valves are closed from factory After wrapping service valve with a wet Refrigerant tubing This check should Evacuate Refrigerant Tubing and Indoor Coil Failure to follow this caution may result in equipment Installation of filter drier in liquid line is required. Never use the system compressor as a vacuum pump. Refrigerant tubes and indoor coil should be evacuated using the The alternate See Service Manual for Always break a vacuum with dry Deep Vacuum Method. The deep vacuum method requires a vacuum pump capable of The deep vacuum method Refrigerant Tubing connection Outdoor. Connect vapor tube to fitting on outdoor unit vapor service valves Although it is a heat pump this unit has a standard AC liquid Final Tubing Check. IMPORTANT Check to be certain factory tubing on both indoor Ensure tubes are Connect Control Wiring Infinity Touch. Connect to Infinity connections. Only two wires AB to Infinity Connect C if IMPORTANT This system requires the power supplied to the Connect Control Wiring Non Communicating. Do not supply power to unit with compressor terminal box Be sure field wiring complies with local and national fire, safety, Contact local power company for correction of NOTE Operation of unit on improper line voltage constitutes See unit rating plate. Do not NOTE Use copper wire only between disconnect switch and unit. NOTE Install branch circuit disconnect of adequate size per NEC Locate disconnect within sight from Route Ground and Power Wires. Remove access panel to gain access to unit wiring. Extend wires Unit is configured by factory for Infinity To wire unit for noncommunicating ABCD plug and connect appropriate wires to low voltage terminal General Information. Use No.

18 AWG or larger color coded, insulated 35 Call wiring must be NEC Class 2 and must be separated from Use furnace transformer, fan coil transformer, or accessory The outdoor unit has its own transformer Final Wiring Check. IMPORTANT Check factory wiring and field wire connections to Check wire routing to User Interface UI. Furnace or Fan Coil C and D Communicating Variable Speed HP Fan Coil Heat Stage 3 Rh Rc. Dry Contact 1 Required for. Single Stage Valve. Outdoor Sensor. Remote Room. Sensor Furnace. Heat Pump Rh Rc. Sensor Step 9 — Install Accessories. This compressor has an internal crankcase heater. Furnish power To furnish power to heater only, set thermostat to OFF and close Power is not required to the indoor unit or User Interface for proper No refrigeration circuit accessories are required or are available for External to the unit, the same See Fig. 9. Refer to the individual Installation Instructions Airflow Setup for Infinity Touch Control Furnace This system can only be installed with Infinity capable indoor and. Infinity Touch User Interface UI SYSTXCCUITN01 or. SYSTXCCUITW01 with version 11 software or newer. When The user has the option of. Cooling modes. These should be selected based on balance Due to using a communicating control with the fan coil or the The outdoor Fig. 9 Recommended Support Feet Location. Step 10 — Start Up The system can be installed with a standard 2 stage heat pump Select appropriate unit size on fan coil Easy select board. For replacement applications with older FV4A,B, FK4 and 40FK Table 2 below. The model plug adjusts compressor speed to match available low Unit Size Observe the following Factory. Required Accessory See accessory list for approved TXV. Airflow Setup for Noncommunicating Furnaces Federal regulations require that you do not vent refrigerant

to CHARGE CALCULATION screen. Enter the line set. The user interface UI charging mode operates system compressor speed and fan. NOTE See Step 13 for charging check. Compare subcooling at liquid line service valve Fig.

11 Liquid Line Subcooling Target Operation. The 25VNA8 models utilize either Infinity Touch Communicating. User Interface UI or conventional HP thermostat. When using UI if this does not satisfy. When all demand is satisfied, the compressor will shut off. As the user interface UI displays the operation mode and fault codes. See Table 7 for codes. The conventional thermostat inputs are designed to work with most connections. NOTE Only one code will be displayed on the outdoor unit Operation Control AOC board see Fig. 19 will open the EXV to. For heating, the AOC board will open the EXV to a preset position, depending upon the conditions. Based. If the conditions are correct for operation, the control board will. The unit 0 for compressor LRA will. During operation, the AOC monitors itself and the compressor MOC board monitors the temperature, current and operational. When the demand is satisfied, the inverter will ramp down the EXV will step down to the. When the compressor stops, a 3.5 minute Time Guard period is. Upon equalizing the Guard period, the compressor will be ready for the next operational. If there is a power cycle, the Pressure Equalizer Valve PEV will. Opening the PEV valve returns the discharge gas directly back to the suction. This is done in either cooling or heating. The 3.5 minute Time Guard can be bypassed by momentarily Crankcase Heater Operation. Communication and Status Function Lights. This unit has an internal crankcase heater that will be energized. The crankcase heater will function. The indoor unit. The compressor windings will occasionally be energized during. The compressor will not run. Infinity Touch Control, Green Communications. A green LED COMM light on the outdoor board see Fig. 12. If no communication is received within 2. Amber Status Light. Amber colored STATUS light indicates operation and error status. See Table 7 for definitions. S Two minute time delay to return to standby operation from last Outdoor Fan Motor Operation. The outdoor unit control Fig.

12 energizes outdoor fan anytime. The OD fan motor Time Delays. The unit time delays include. S 3.5 minute time delay after last cycle, initial power up, return. To bypass this feature, momentarily. S At the end of every compressor ON cycle, there will be 15. ON cycle. This delay cannot be bypassed as it helps compressor. S 15 second delay at termination of defrost before the auxiliary. S See Table 7 for other delay information. Defrost. This user interface UI offers 5 possible defrost interval times 30, The default is AUTO. Defrost interval times 30, 60, and 90 minutes or AUTO are. The 90 and 120 minute selection will default to 60 minutes at. The 120 minute selection will default. If using noncommunicating thermostat, defrost intervals are set. A defrost demand exists. S Upon initial power up the first defrost interval is defaulted to 30. The defrost cycle is terminated as described below. S Or 10 minutes has passed. At the defrost termination, the outdoor fan will turn on 10 seconds. NOTE Compressor speed during defrost will go to defrost speed. Step 12 — Check Charge. Charge in CHARGING mode communicating only. Factory charge amount and desired subcooling are shown in the. Favorable conditions exist when the outdoor temperature is. Charging Procedure Unit is factory charged for 15ft 4.57 m of. Therefore, the UI is your source of information for charging the. NOTE UI indicates acceptable conditions if outside of this range. If the range is acceptable, go the CHARGING screen in the user. Allow system to operate in. If any adjustment is necessary, add or remove the charge slowly. The use of a commercial charge metering device restrictor such as. Imperial liquid low side charger model 535C or Watsco. Charge. Faster model CH200 is recommended when adding. This prevents potential damage. The charge level could then be. This ensures. Charging Non Communicating Systems. Charging Procedure Force system to operate in high stage. Use multimeter to verify that 24.

Factory charge amount is shown on unit rating plate for high stage. Target subcooling chart is provided on back of control box door. To properly check or adjust charge, Follow the procedure below. Unit is factory charged for 15ft 4.57 m of line set. Adjust charge. If conditions. The charge level should then be. NOTE If the line length is beyond 80ft 24.38 m or greater than. Number. FE4A or

FV4A,B,CNF002. FE4A or FV4A,B,CNB,F003. FE4A or FV4A,B,CNB,F005. FE4A or FV4A,B,CNB006

Fig. 15 Charging in Cooling Mode 25VNA848 In heating mode, the required charging method is by weighing. On Use the Defrost CHECKOUT mode to remove ice or frost from To use the Heating Check Chart, the user interface UI must be in. Refrigerant Charging mode selected from the Installation and. Service screen. The Charging Mode Selection screen will show Method. Select Heating Check Charge Method. The Heating. Check Charge method will only be displayed if the conditions are When Heating. Check Charge Method is selected, the system will operate by To use the Heating Check Chart in noncommunicating systems. These charts indicate Add 12 psig if NOTE When charging is necessary during heating season, charge Heating Check Chart 24, 25 Vapor Service. Valve Pressure. Refrigerant Pressure psig Fig. 17 Heating Pressure Check Chart 25VNA836. Fig. 18 Heating Pressure Check Chart 25VNA848 Federal regulations require that you do not vent refrigerant to If this system requires either a Pump Down or Evacuation for any Pump Down Infinity Communicating. Because this system is inverter controlled, compressor, suction HEAT mode allows the refrigerant to be isolated in indoor Default time period for the procedure is 120 minutes. Compressor protections are still active to prevent damage to the compressor or This charge must be manually recovered. A Because this system has an inverter controlled compressor, suction Evacuation and recovery of refrigerant from 25VNA8.

<http://schlamm.atlas.de/en/node/18606>